

MailFiler Inc.
http://www.mailfiler.com
Info@mailfiler.com



Product Highlights

- * Powerful email management tool.
- * Works with Microsoft Outlook 2000, XP and 2003
- * Manages emails through Categories / Jobs / Cases / Projects / Clients—you pick the terminology that suits your business.
- * Delivers structured filing and shared access of sent and received mails by Job / Case / Project etc.
- * Includes browser access to emails.
- * Saves attachments to file system or web site.
- * Collate and share email addresses on a Job / Case / Project level.
- * Optionally force all email to be associated with Jobs / Cases etc.
- * Also contains all the features of standard MailFiler which include Inbox management, SPAM and Bulk mail handling, message threading, message alerts and many more features.

MailFiler Pro delivers advanced email grouping, filing and sharing for your business or personal needs.

Depending on what your job function is or what type of business you work in you will have a system for how you work.

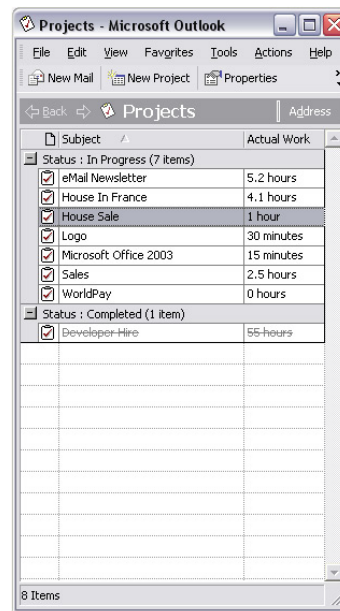
If you work in Sales you probably work by **Client**. If you are a Real Estate Agent its by **Property**, a lawyer by **Client** or **Case**, a Project Manager by **Project**, a designer by **Job**. If you work in Human Resources it might be by **Employee** or in support a **Support Case**. The list goes on but you can probably easily identify what it is for you or your company.

MailFiler Pro lets you define that terminology—lets call it a **Project** here but you can substitute your own words.

Example Scenario

A law firm is dealing with clients via email. A new job starts so with the first email a new **Case** is created and assigned the **Case ID**. When people in

Once you have the concept of the Project you can do many things with



MailFiler Pro list of 'Projects'. This could be Jobs, Products, Cases or whatever suits your business.

it including managing a private or shared list of Projects, setting and automatically capturing email addresses associated with each Project, getting a single view of all mails **sent and received** by all people involved with the project.

The view can be an Outlook folder, Exchange Public Folder, Network Shared Folder (LAN) or a Web Site. SharePoint and SQL Server also planned for the future.

All mails are indexed by project and grouped by conversation making it easy to track the sequence of events and the participants. A master index of projects is created. Attachments are also saved and automatically linked to the mails.

the law firm write emails they pick the case ID from the dropdown list. All case mails sent and received are saved to a common location. In addi-

tion they are published internally and available via a Web Browser, Contact email addresses are automatically maintained.

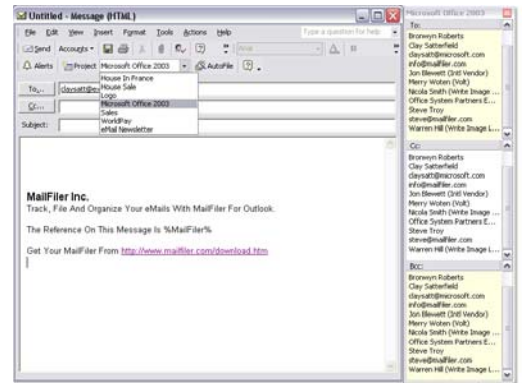
Create A Project Mail

When you create a project you can specify contact email addresses to associate with that project. MailFiler Pro will also automatically add additional contact addresses whenever somebody creates or files mails related to that project.

To create a new project mail you can either select the project and click 'New Mail' or you can hit 'New' as normal in Outlook and then select a project from the dropdown list. This mail and this conversation is now linked to the project.

MailFiler Pro will display the email addresses associated with this project in a toolbar window to the right of your new mail—you can choose who to send To, Cc or Bcc with a single click.

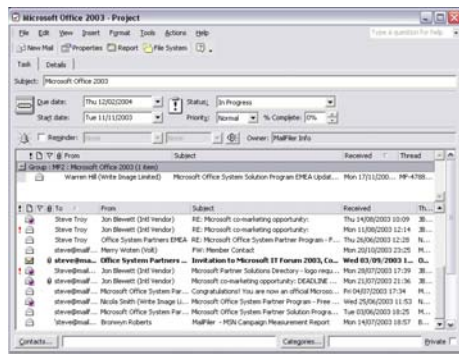
This makes sure that you or anybody else who is involved in the project has the correct email addresses and has quick and easy access to them.



When you create a new mail or reply to or forward a mail you can associate it with a specific project and select from the project contact email addresses.

MailFiler Pro will save your mails to a local or network disk— all grouped and navigated by project and conversation. You can even customized how the mails will look with your company logo or corporate look and feel.

A Combined View Of Project Mails And Project Status



See Project status, project mails in the Inbox and all sent and received project mails all in the one

The project is built on top of an Outlook task so you get all the standard features such as Project status, start and completion dates, work done etc.

In addition to this MailFiler Pro will give you a view of all sent, received mails and new messages in the Inbox related to the project.

In addition this view MailFiler Pro can also group all mails in the Inbox together under their respective project names.

You can mark incoming mails as belonging to a specific project.

You can also choose to always associate certain senders with specific projects.

Save Project Mails To A File System Folder

MailFiler Pro has sophisticated support for making copies of email conversations to either your local hard drive, a network folder or a virtual directory for a Website.

You can choose to save your project mails as HTML, Word (RTF), Text, Outlook MSG or XML.

You can also choose to leave the attachments (MSG only), drop them or copy them. For HTML MailFiler Pro will

create links to the attachments. For every project an Index will be created which lists all the conversations. Each conversation can be expanded to show the individual messages. Copied messages are stamped with who saved them, and when, and also what project they belong to.

You can choose to only file the messages in the file system and remove them from the Outlook folder when

they are copied (Save Mailbox / PST space).



HTML version of a saved email

Automatically Build A Website Of Project Mails

In addition to being able to save project mails to the file system MailFiler Pro can create project level indexes and a master index of all projects which would form the 'home page'.

These indexes are built using XML/XSL giving you full control to define your own look and feel for the resulting web pages.

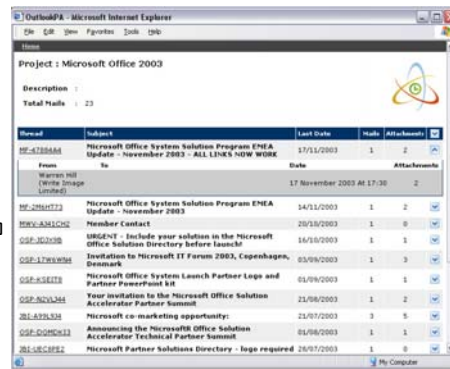
By pointing the project at a virtual directory and setting up IIS (Internet Information Server) with that virtual directory your project emails will be published to your website as they

come in, as they are sent and as they are filed.

Additionally you can use the Windows Indexing Service to perform full text rapid web searches across the emails to rapidly find and retrieve specific messages.

You can decide who you want to give access to through IIS directory permissions.

Full access to email attachments is available via browser access.



A sample web page showing the index of email conversations in a project. The look and feel can be completely customized.

Share Details Of Projects / Jobs And All Their Email Correspondence

MailFiler Pro works off standard Outlook Tasks objects. These can be in each users MailBox or in an Exchange Public Folder.

When a Project / Job is created it can be automatically sent to the participants and appear in their list. Alternatively it can be created in an Exchange Public Folder.

Within a Project or Job you can specify the folder that will be used for filing all incoming and sent items related to that Project / Job.

All users can gain access to a unified view off all the mails **Sent And Received** if this is a public or shared folder.

In addition all email address details of

people involved with the Project / Job can be setup and shared. As mails are sent and received these addressed will automatically be captured and made available when anybody needs to send a mail or Cc people involved with the Project / Job.

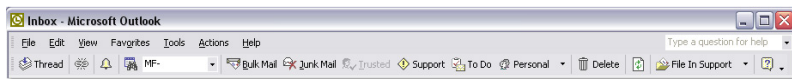
View complete email conversations—even from a web browser.

Get a complete view of all mails sent and received.

MailFiler Pro Includes All The Features Of MailFiler For Outlook

MailFiler for Outlook has many features to dramatically improve user productivity in dealing with emails.

It will **organize your inbox**. It will analyze incoming mails and group them, giving you a clear and structured view of your messages. You can use the standard groups or add in your own groups. You can even use



MailFiler For Outlook Toolbar

the Outlook Rules Wizard with groups

It will **track message threads** and in most cases will be able to **suggest the right filing location** - you simply click the button.

It can **remind and alert you** for re-

sponses to your emails.

It provides a **'To Do' list**. It will isolate and **get rid of SPAM** working off blacklists with advanced logic to detect 'Suspect' messages.

It will manage your **bulk mail** (subscriptions).

For more see www.mailfiler.com



MailFiler Inc.
Dublin,
Ireland.

Information: info@mailfiler.com
Support : support@mailfiler.com
Sales : sales@mailfiler.com

MailFiler Inc.

MailFiler Inc. is uniquely focused and dedicated to the task of making email communication more productive, efficient and easier for everybody to use. We hold United States Patents on unique systems to add 'Reference Identifiers' to electronic messages and to use those references to identify, track, sort, file, organize and retrieve electronic messages. MailFiler Inc. was founded in 2001. It is a private company, backed by technology company fund investors and is headquartered in Dublin, Ireland.

Requirements

MailFiler Pro requires Microsoft Outlook 2000, Outlook XP or Outlook 2003 running under Windows 98, ME, NT4, 2000, XP or 2003. For Web Access IIS (Internet Information Server) Version 4 or later is required. For certain configurations where shared access to lists is required Microsoft Exchange server (5.5, 2000 or 2003) may be required.

License Info

MailFiler Pro is licensed per user on a named email address basis. There are volume discounts available. Support and update subscriptions are mandatory for the first year.

For information on pricing visit <http://www.mailfiler.com/license.htm>

For more information visit
<http://www.mailfiler.com>

More Technical Information

MailFiler Pro is based on patented technology from MailFiler Inc. that was first available in the MailFiler For Outlook product.

Every message conversation is given a unique reference identifier. In MailFiler that identifier is associated with an Outlook Folder. In MailFiler Pro it is also associated with a project / job / case etc. and this in turn holds other information such as whether to copy mails to a fileshare, to record the work done etc.

The list of projects is stored either in an Outlook folder or in a shared Exchange Public folder. The project folders can also be either in the local

message store, file system folder or an Exchange Public Folder.

All project data, time & cost information, indexes of mails and the index of projects is all stored as XML and is fully accessible for extraction, reporting, viewing and manipulation. All schemas are published on www.mailfiler.com.

All web views are based on HTML templates or XSL stylesheets which can be modified and configured.

MailFiler Pro is installed on the clients only via a single .MSI file. There is no server installation required.



All project data is saved as XML
and is open and accessible.